

# The Drawing Room

## Tony Girardot

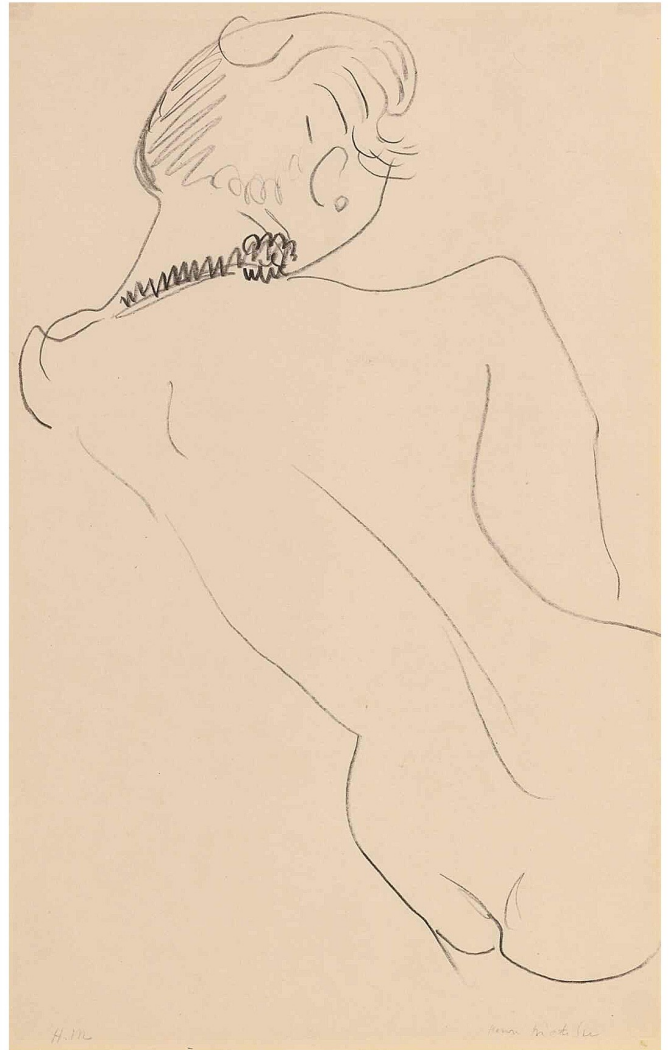
### What's your line?

Everyone draws differently and I would be disappointed if everyone's work in our group started to look the same. Luckily that's not happening and I can see individual personalities reflected in the artwork throughout the group. I might see someone's drawing and say 'I like your line'. So, what am I seeing? Quite simply I'm seeing the your personality in the quality and choice of the line drawn. The choices you make in drawing are a reflection of your character.

Line can be more expressive than a 'photographically shaded' drawing and much more dynamic. Adding variety to a line's thickness will imply energy, also, when used as an outline, suggests the form or object that it encloses. Therefore a line should be more considered, that is to say, you should determine the purpose it will serve.

Drawing with a constant thickness of line and then shading in a photographic manner is a no no. The result is a flat, laboured and seemingly overworked drawing lacking energy. If photorealism is required then the sketch lines need to be precise and almost invisible. This type of drawing takes time and constant reworking. The end result might be impressive but the process laborious.

There needs to be a balance between line and shading and so ideally one or the other needs to be dominant. When we look at a drawing the brain fills in missing details so it's not always necessary to over emphasise parts that are blatantly obvious. Most of you have probably worked this out already but it's always good to bear that in mind and constrain your enthusiasm when getting carried away with the actual process of drawing. Only draw what you see and try to make every mark count. Don't draw for the sake of drawing!



Henri Matisse

Don't forget you can share your ideas, work and influences on the Drawing Room Facebook group page. It's a great way to keep in touch with other group members and compare notes and influences. It's restricted to Drawing Room students only and can be easily found by searching > The Drawing Room-UK < when you're on Facebook. Meanwhile keep safe and keep drawing.